

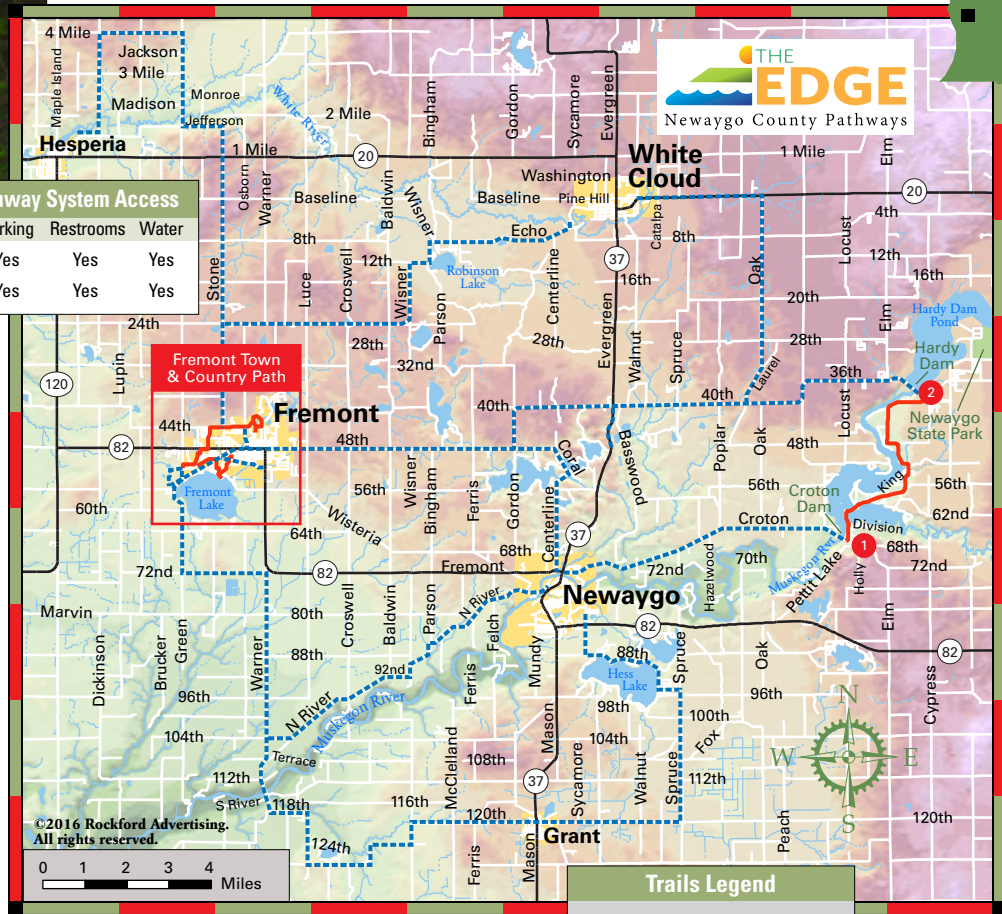
About a half-mile of the trail was built on an abandoned roadway near Croton Dam.

**Newaygo County Pathway System Access**

Access Site	Parking	Restrooms	Water
1 MK Conklin Park	Yes	Yes	Yes
2 Hardy Dam Park	Yes	Yes	Yes

## “The Edge” Newaygo County Pathways

The first 6 miles of “The Edge: Newaygo County Pathways” from Croton Dam to Hardy Dam along the Muskegon River was completed in the fall of 2013. This first “dam-to-dam” section is part of a county-wide project to build over 80 miles of connected, paved pathways for walkers, runners and cyclists. An outdoor sports playground, picturesque Newaygo County is known for its hilly terrain and lush valleys surrounding the Muskegon and White rivers and its many lakes, wetlands and streams. When completed, the pathways will connect 12 townships and the communities of Fremont, Grant, Hesperia, Newaygo and White Cloud.



**Trails Legend**

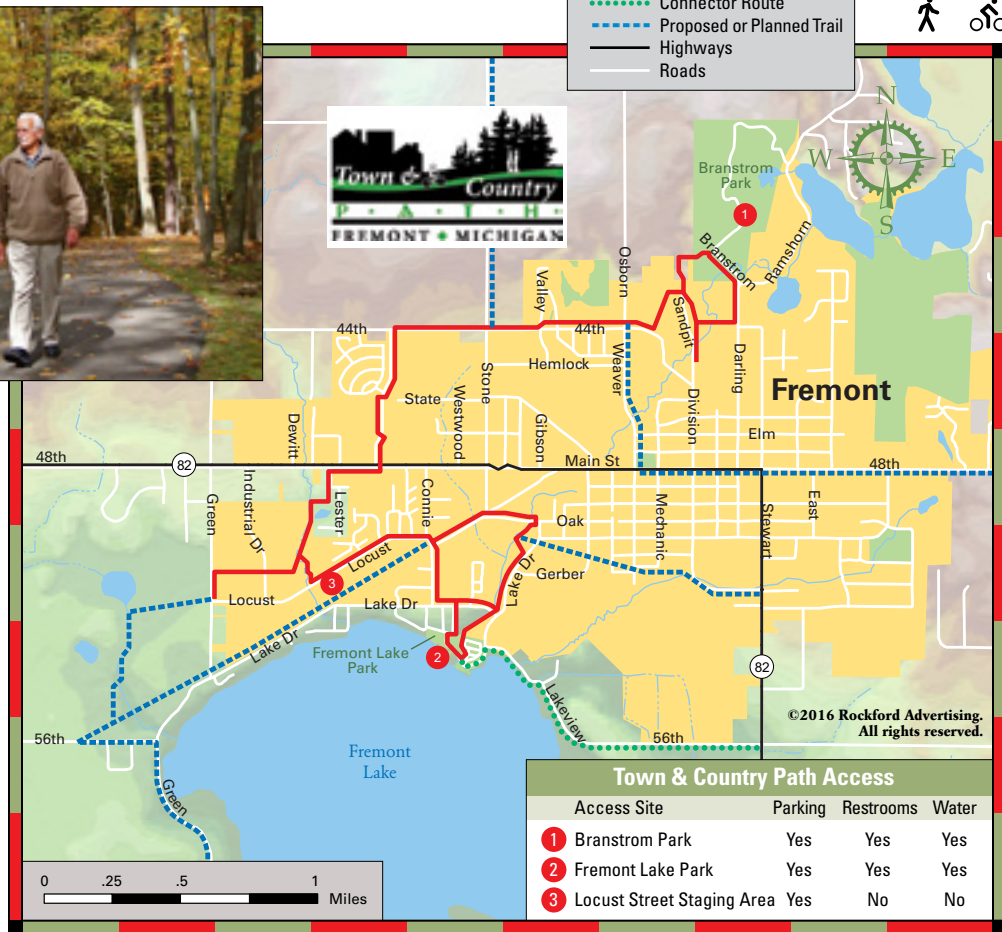
- Paved Trail
- ⋯ Connector Route
- - - Proposed or Planned Trail
- Highways
- Roads



Connect with nature on the Fremont Town & Country Path.

## Fremont Town & County Path

“Baby Food Capital of the World,” Fremont is home to Gerber Foods, a thriving downtown shopping district and the Fremont Town & Country Path. The 6-mile paved pathway takes you on a scenic tour through ravines and wooded areas, over bridges, past farms fields and ponds, connecting several parks, schools, commercial districts and the beach at Fremont Lake. Most of the pathway is off-road with a 10-foot-wide asphalt surface. It’s a great way to explore this historic town. You’ll find local lodging, camping on Fremont Lake, and several good places to eat and unwind.



**Town & Country Path Access**

Access Site	Parking	Restrooms	Water
1 Bransstrom Park	Yes	Yes	Yes
2 Fremont Lake Park	Yes	Yes	Yes
3 Locust Street Staging Area	Yes	No	No

“The Edge” Newaygo County Pathways • Fremont Town & Country Path