



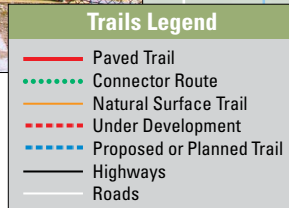
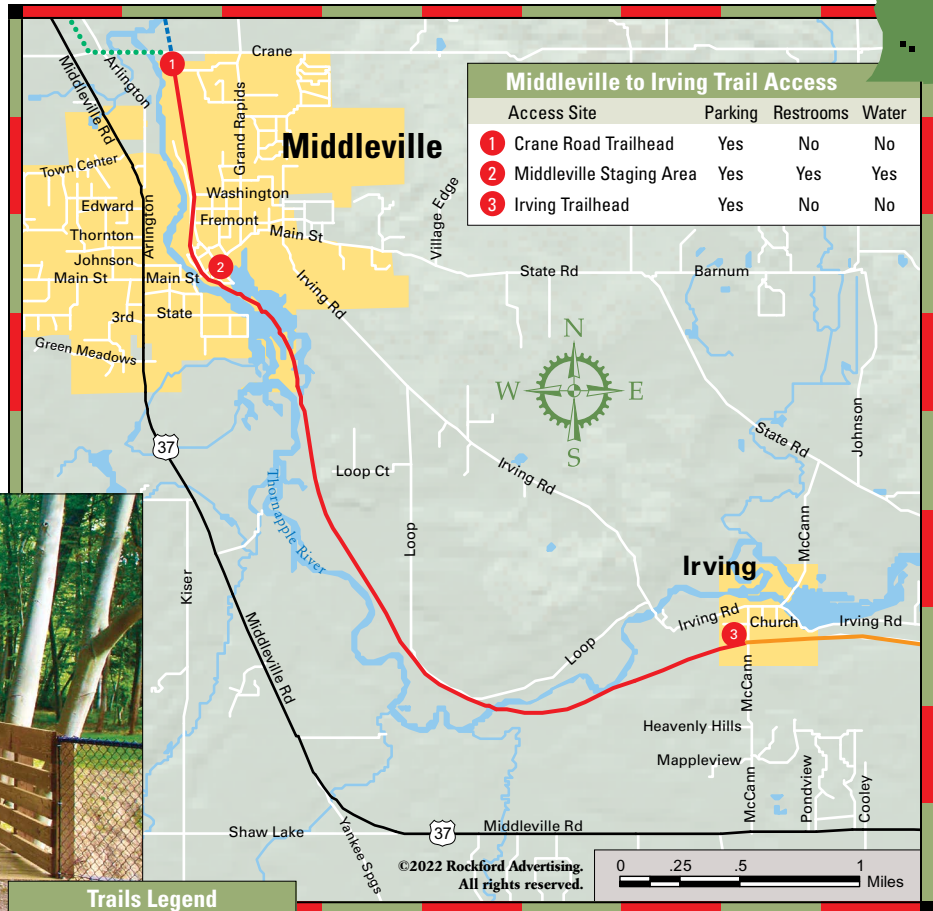
Paul Henry Thornapple Trail

Middleville to Irving

The 4.6-mile segment through Middleville to Irving is the most scenic and popular stretch of the Paul Henry Thornapple Trail. You'll find a staging area behind Middleville Village Hall. The newest section of trail, north of downtown, is nicely landscaped and crosses several bridges. Beginning at the gazebo, the first half-mile south passes over two bridges and by several scenic overlooks with views of vast wetlands. It's a great location for bird watching. From there, the trail travels along the banks of the river through a long tunnel of trees to Irving. A beautiful ride.

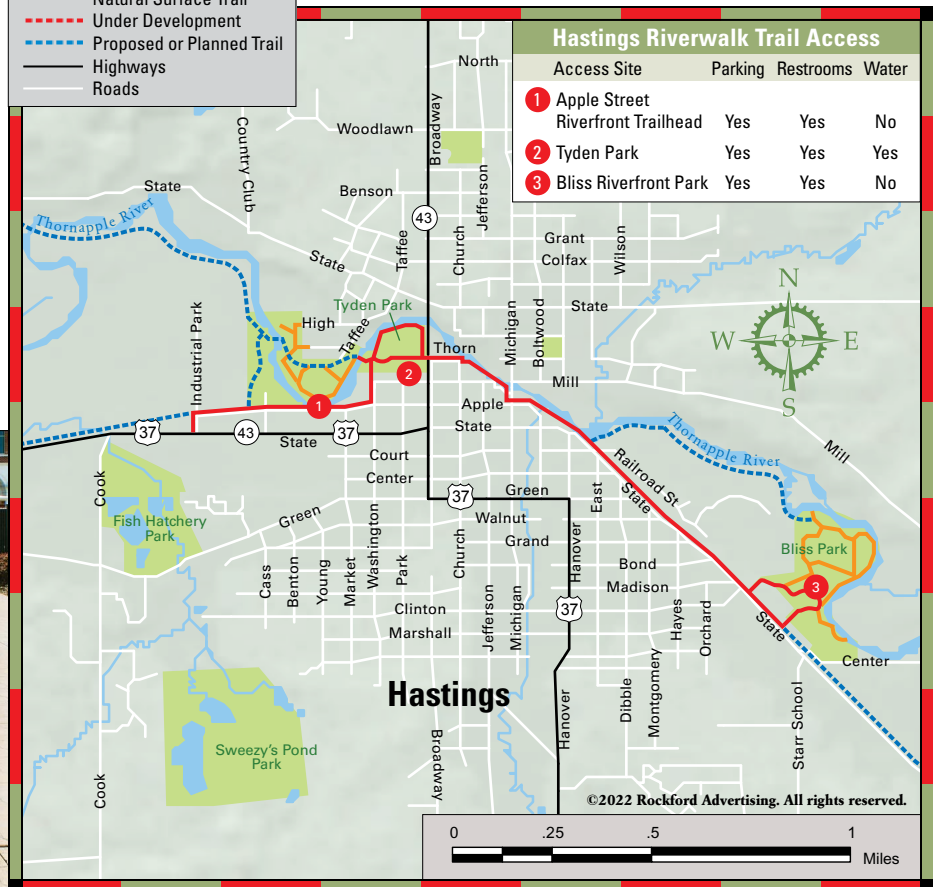


Newest section of trail in Middleville



Hastings Riverwalk

Another scenic section of the Paul Henry Thornapple Trail, the 2.4-mile Hastings Riverwalk was completed in 2015 from the former railbed on Industrial Park Drive to a circular loop at Bliss Riverfront Park. The paved multi-use trail is part of a proposed network of paths and nature trails currently under development along the Thornapple River by the city of Hastings. Hastings is a popular destination for paddle-sports and home of the world-famous Barry-Roubaix Killer Gravel Road Race in the spring. You'll find bicycle and kayak rentals, lodging and several good places to eat in Hastings.



Paul Henry Thornapple Trail • Hastings Riverwalk