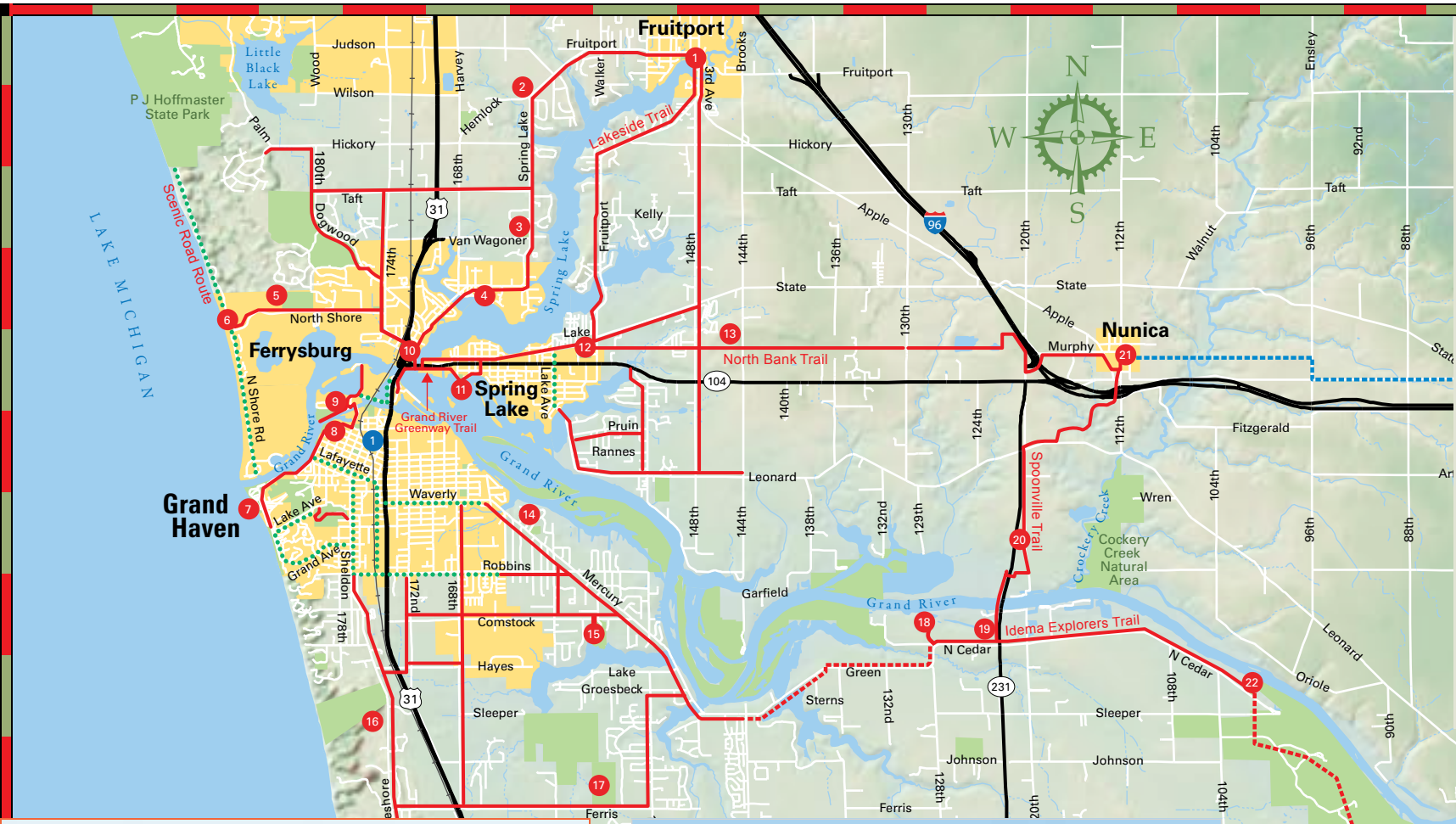




Grand River Greenway Trails Network

Grand River Greenway Trails Network



Grand River Greenway Trails Network

When you visit the tri-cities area, you'll find an extensive network of paved paths and bike routes connecting the area's beaches, bayous, lakes, rivers, parks, and local attractions. In Grand Haven, you'll find easy access to the **Grand Haven Waterfront Trail** at Grand Haven State Park and several public parking areas all along the waterfront.

Lakeside Trail

When you cross over the north side of the US-31 drawbridge, the trail system connects with the 15-mile Lakeside Trail, which encircles Spring Lake through the communities of Ferrysburg, Fruitport and Village of Spring Lake. Trails in the Village of Spring Lake also lead to the new North Bank Trail and the Grand River Greenway Trail with views of the Grand River.

North Bank Trail

The 5.2-mile North Bank Trail begins at Central Park and travels east through a scenic landscape of blueberry fields, woodlands and marshes to a new trailhead in downtown Nunica, where it now connects with the Spoonville Trail.

Spoonville Trail

Named after a ghost town that once stood at the mouth of Crockery Creek on the Grand River, the 3.5-mile Spoonville Trail was completed 2020, including a new trailhead on 120th Avenue. The Spoonville Trail crosses over the Sgt. Henry E. Plant Memorial Bridge, creating an important connection between the North Bank Trail and Idema Explorers Trail.

Idema Explorers Trail

Brainchild of Ottawa County Parks, the Idema Explorers Trail has been built in several phases, and will eventually stretch 30 miles connecting Grand Haven to Grand Rapids. The first 3.9 miles of the Idema Explorers Trail from Conner Bayou to Riverside Park was completed in 2018. Over the past few years, a 6-miles section was completed between Grand River Park and GVSU, plus a 3.32-mile section in Jenison. The section between Grand River Park to Grand Ravines and Dog Park is thoroughly scenic. The trail section from Conner Bayou to 144th Avenue is scheduled for construction in 2024.

Grand River Greenway Trails Access

Access Site	Parking	Restrooms	Water
1 Pomona Park	Yes	Yes	Yes
2 Rycenga Park	Yes	Yes	Yes
3 Water Tower Park	Yes	Yes	No
4 Sunnyside Park	Yes	Yes	Yes
5 Coast Guard Park	Yes	Yes	Yes
6 North Beach Park	Yes	Yes	Yes
7 Grand Haven State Park	Yes	Yes	Yes
8 Chinook Park	Yes	Yes	Yes
9 Linear Park	Yes	Yes	No
10 Ferry Park	Yes	Yes	Yes
11 Mill Point Park	Yes	Yes	Yes
12 Central Park	Yes	Yes	Yes
13 North Bank Trailhead	Yes	Portable	No
14 Mercury Drive Park	Yes	No	No
15 Pottawatomie Park	Yes	Yes	No
16 Rosy Mound Natural Area	Yes	Yes	Yes
17 Hofma Park	Yes	Yes	Yes
18 Conner Bayou	Yes	Vault	No
19 M-231 Trailhead	Yes	Vault	No
20 Spoonville Trailhead	Yes	Portable	No
21 Nunica Trailhead	Yes	Portable	No
22 Riverside Park	Yes	Vault	No
23 Dog Park	Yes	Yes	Yes
24 Grand Ravines Trailhead	Yes	Yes	Yes
25 Grand River Park	Yes	Yes	Yes
26 12th Ave Parking	Limited	No	No
27 Baldwin St Trailhead	Yes	No	No

ROCK 'n' ROAD CYCLE



GRAND HAVEN
100 N. Seventh St. 616.846-2800

HOLLAND
954 Butternut Dr. (at Riley) on bike path
616.796-0010

See website for store hours
www.rockroadcycle.com

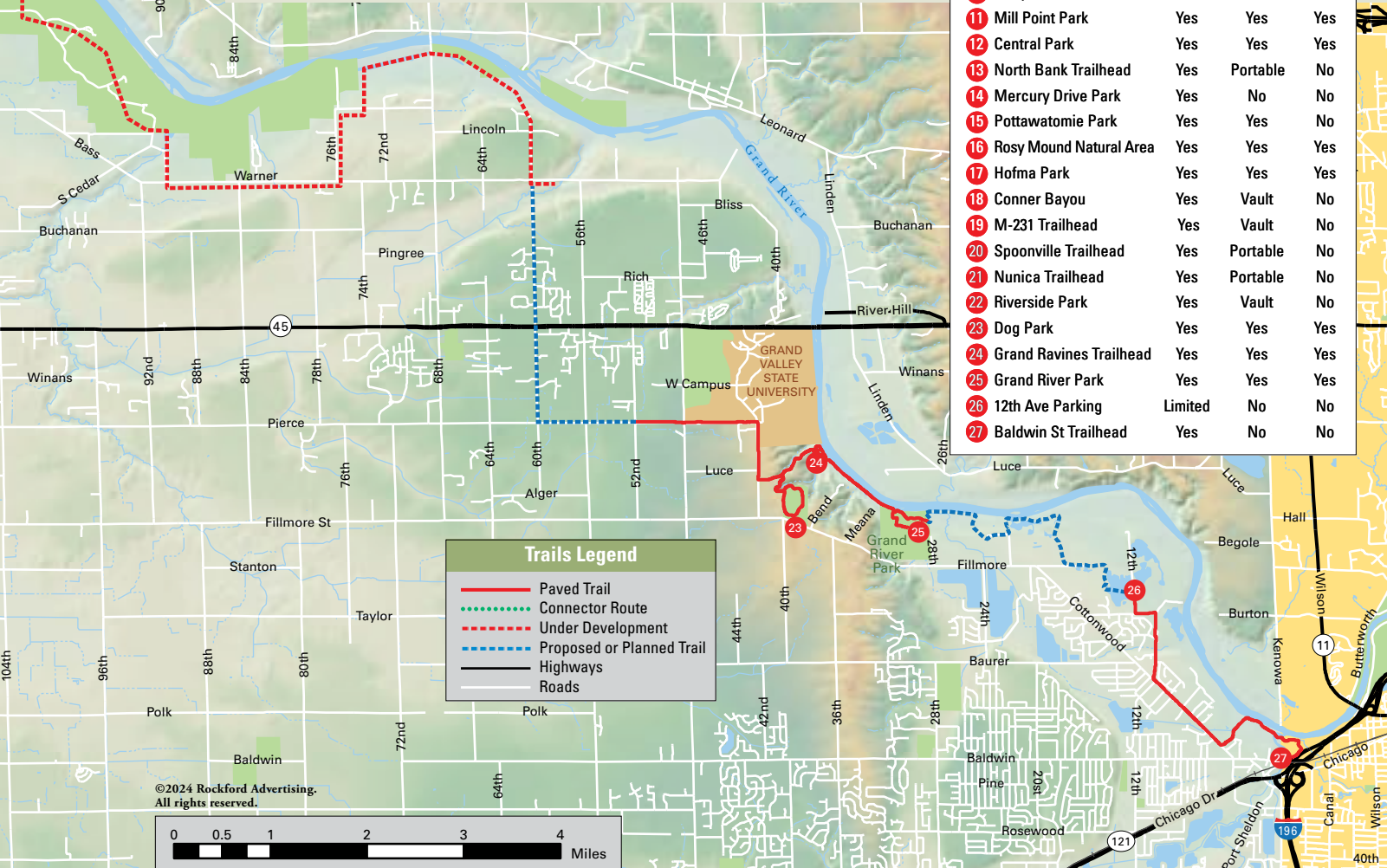
IT'S ONLY NATURAL



When the days get warmer, it's only natural to head to the Grand Haven Area. Shaded trails and sunny beaches. Fresh produce picked that morning. Drinks on a patio while boats parade past. Brightly colored skies behind stoic lighthouses. A boardwalk dotted with shops and eateries. Live music and famous festivals. #VisitGrandHavenArea

In the Grand Haven Area, it's all here, and it's only natural.
VisitGrandHaven.com

Grand Haven AREA MICHIGAN



1 See locations on map on pages 76 and 79.